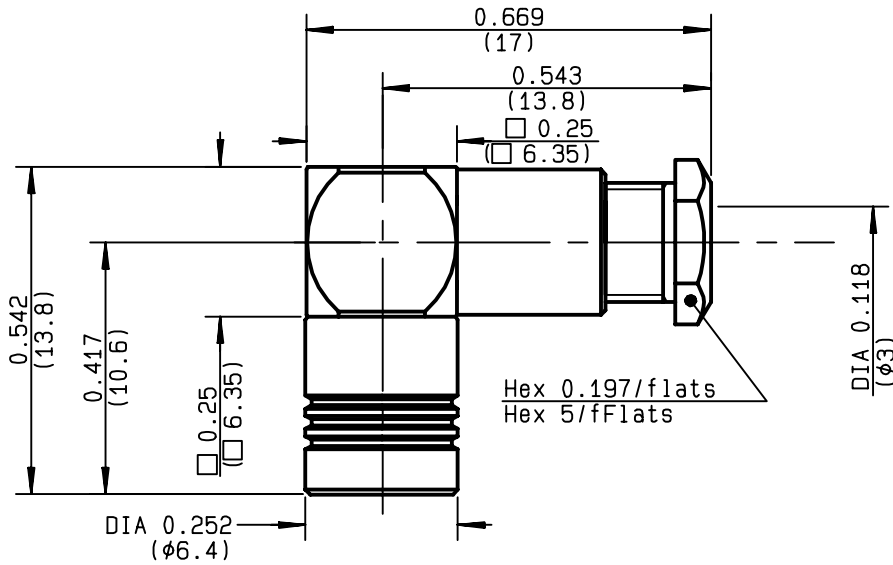


**RIGHT ANGLE PLUG CLAMP TYPE
CABLE 2.6/50+75 S**

R114.165.180
SERIES SMB



NOMINAL IMPEDANCE	50 Ω
FREQUENCY RANGE	0-4 GHz
TEMPERATURE RATING	-65/+165 °C
V.S.W.R	1.35 + .04 x F(GHz)Maxi
RF INSERTION LOSS	0.50 √F(GHz) dB Maxi
VOLTAGE RATING	335 Veff Maxi
DIELECTRIC WITHSTANDING VOLTAGE	1000 Veff Mini
INSULATION RESISTANCE	1000 MΩMini
HERMETIC SEAL	NA Atm.cm ³ /s
LEAKAGE (pressurized only)	NA
MECHANICAL DURABILITY	500 Cycles
WEIGHT	4.8 gr
SPECIFICATION	TYPE M39012D/69-0004

CABLES : **KX 22A**
RG 179
RG 187
RG 188
RG 316

OTHERS CHARACTERISTICS

CABLE RETENTION	110	N Mini
CENTER CONTACT RETENTION		
Axial force - mating end	10	N Mini
Axial force - opposite end	10	N Mini
Torque	NA	cm.N Mini
RECOMMENDED TORQUES		
Mating	NA	cm.N
Panel nut	NA	cm.N
Clamp nut	70	cm.N

CONNECTOR PARTS:	MATERIALS	FINISH	(all values are given) in micrometers
BODY	BRASS	GOLD 1.3 OVER COPPER	0.5
OUTER CONTACT	BERYLLIUM COPPER	GOLD 1.3 OVER COPPER	0.5
CENTER CONTACT	BERYLLIUM COPPER	GOLD 1.3 OVER NICKEL	2
INSULATOR	PTFE	-	
GASKET	-	-	
OTHERS PIECES	BRASS	GOLD 1.3 OVER COPPER	0.5

ISSUE **9940E00** CREATION DATE **16/07/1985** FILE PART-NUMBER



PICTON

The information given here is subject to change without notice.
Design changes may be in order to improve the product .

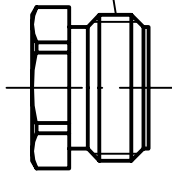
Connect to the future



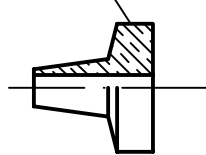
R114.165.180

ISSUE **9940E00** SERIES **SMB**

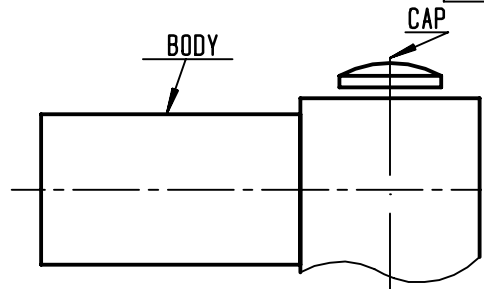
CLAMP NUT



CLAMP BRAID SLEEVE



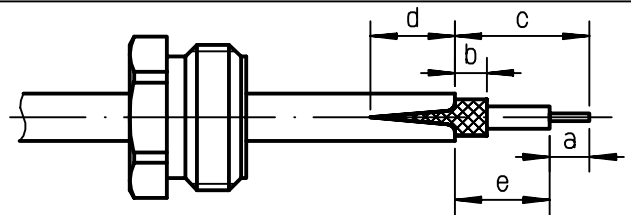
BODY



CAP

①

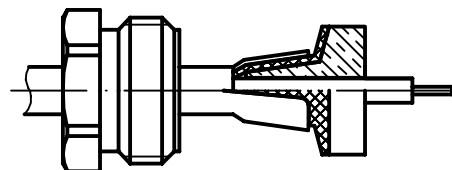
Slide clamp nut onto cable .
Strip the cable .
Cut 2 slots in the jacket
if necessary .
-



Stripping	a	b	c	d	e
inch	0.079	0.039	0.276	0.125	0.197
mm	2	1	7	3.18	5

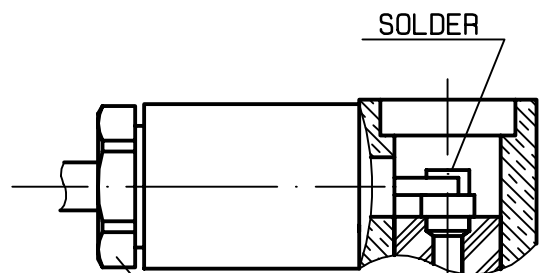
②

Slide the clamp braid sleeve between
cable dielectric and braid .
Cut the braid flush with the clamp
braid sleeve .
-
-
-
-



③

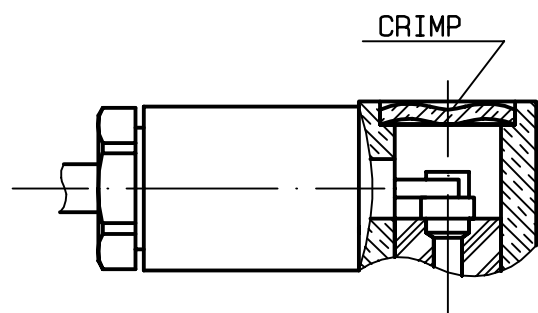
Screw sub-assembly into the connector
body .
(recommended coupling torque 70 N.cm)
- 6.19 in.lb
Solder the cable inner conductor.



Hex. : 5.5 mm /Plats
Hex. : 0.217inch /flats

④

Press cap flush or slightly below
surface of body assembly .
-
-
-



CRIMP

PICTON